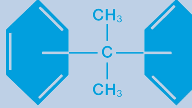


# EPOPLEX®



## LS60 Viscosity vs. Temperature

1000 East Park Avenue • Maple Shade, NJ 08052 • 800.822.6920 • FAX: 856.779.2963

### EPOPLEX® LS60 - Viscosity (cP)

Temperature	Hardener	White	Yellow
70°F/21°C		2930	3960
75°F/24°C	1640	2020	2680
80°F/27°C	1210	1460	2040
85°F/29°C	930	1220	1530
90°F/32°C	765	885	1200
95°F/35°C	560	725	1010
100°F/38°C	455	560	840
105°F/41°C	325	465	695
110°F/43°C	295	395	620
115°F/46°C	230	340	570
120°F/49°C	190	265	520
125°F/52°C	165	235	475
130°F/54°C	135	205	440

**Note:** Material temperatures below 130 F can be selected so that the viscosity of the components will coincide (within 10%), thus allowing for proper flow and mixing of the components.

© 2022 Epoplex

a brand of  
**STONHARD®**